

Industry Leading
Hygienic Designs

Fast, Simple to Use
Online Configurator

Fast Deliveries

BISSC & USDA
Certified Conveyors



*Aqua***Gard**[®]

*Aqua***Pruf**[®]

SANITARY CONVEYORS

Fast and Effective Sanitation
*From Light Wipe Down to Daily High-Pressure
Wash Down Applications*

DORNER[®] 

SANITARY CONVEYORS

Dorner Sanitary Conveyors are Best for:

- Bakery & Snack Foods
- Confectionery
- Fruits & Vegetables
- Ready to Eat Foods
- Proteins
- Dairy
- Medical
- Pharmaceutical
- Processed Foods
- Raw Meats & Poultry
- Primary Packaging
- Secondary Packaging
- Pet Foods
- Bulk Products
- Bottling
- Health & Beauty

Product Comparisons

		Cleaning			Cleaning Agents			Environment		Sanitary Features				Regulations			Specifications			
		Wipe Down	Low Pressure Wash Down	High-Pressure Wash Down	Water	Soap/Water	Diluted Bleach or Alcohol	Foaming Caustic	Dry	Wet	Belt Lifters	Frame Cut-Outs	Tip-up Tail	Complete Tool-less Disassembly	FDA	BISSC	USDA Red Meat & Poultry	Belt Type	Frame Constructions	Configurations
AquaGard®	7100	X	X		X	X			X						X			Flexible Chain	Bolt Together Stainless Steel	Straight/ Curve/ Z-Frame
	7200	X	X		X	X	X		X						X	X		Belt	Single Piece Stainless Steel	Straight
	7300	X	X	X	X	X	X		X						X	X		Belt	Single Piece Stainless Steel	Straight
	7350	X	X		X	X	X		X	X					X	X		Modular Belt	TIG Welded Stainless Steel	Straight/ Curve/ Z-Frame
	7360	X	X		X	X	X		X	X			X		X	X		Belt	TIG Welded Stainless Steel	Straight/ Z-Frame
AquaPruf®	7400	X	X	X	X	X	X	X	X	X	X	X		X	X		Modular Belt	Continuous TIG Welded Stainless Steel	Straight/ Curve/ Z-Frame	
	7600	X	X	X	X	X	X	X	X	X	X	X		X	X		Belt	Continuous TIG Welded Stainless Steel	Straight/ Z-Frame	
	7400 Ultimate	X	X	X	X	X	X	X	X	X	X	X	X			X	Modular Belt	Continuous TIG Welded Stainless Steel	Straight/ Curve/ Z-Frame	
	7600 Ultimate	X	X	X	X	X	X	X	X	X	X	X	X			X	Positive Drive Belt	Continuous TIG Welded Stainless Steel	Straight/ Z-Frame	
	VBT	X	X	X	X	X	X	X	X	X		X	X				Positive Drive Belt	Continuous TIG Welded Stainless Steel	Z-Frame	

The Benefits of Dorner Sanitary Conveyors

Industry Ready

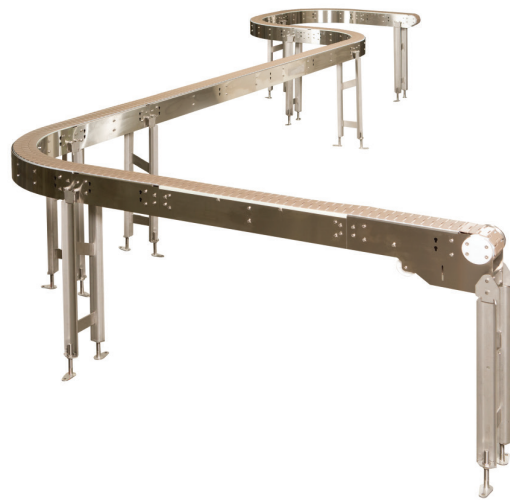
- Designed and manufactured to food equipment standards
- BISSC & USDA certified conveyors
- FDA approved materials and components

Delivers Fast

- Dorner sets the industry standard for rapid delivery
- Standard sanitary conveyors ship in as little as 10 business days

AquaGard 7100 Conveyors

- Flexible and Cleated Flexible Chain Models
- Loads up to 700 lbs (318 kg)
- Widths: 4.5" (114 mm) to 12" (305 mm)
- Lengths: Up to 10' (30,480 mm)
- 300 Series stainless steel frame
- All materials are FDA approved plastics and stainless steel
- FDA approved oil impregnated wear strips on curves
- Bolt together construction for modularity and future add-ons



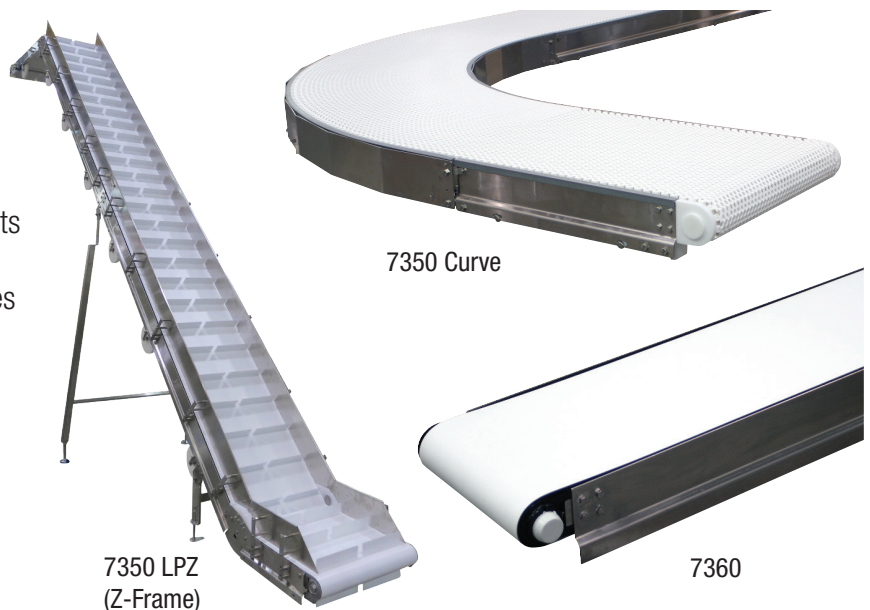
AquaGard 7200 & 7300 Conveyors



- Belted and Cleated Belt Models
- Loads up to 60 lbs (27 kg)
- Widths: 1.75" (44 mm) to 18" (457 mm)
- Lengths: 2' (610 mm) to 18' (8,486 mm)
- 11 gauge stainless steel roll formed frame
- Quick five-minute belt change for increased uptime
- 304 stainless steel frame, head and tail plates are polished to a #4 finish
- Low profile, single piece frame for quick, easy cleaning and integration
- A variety of FDA approved belting to meet application needs

AquaGard 7350 & 7360 Conveyors

- Belted, Cleated Belt, Modular Belt, and Modular Cleated Belt Models
- Loads up to 750 lbs (453 kg)
- Widths: 4" (102 mm) to 36" (914 mm)
- Lengths: 3' (914 mm) to 83' (25,298 mm)
- FDA approved belting and plastic components
- TIG welded 304 stainless steel frame
- Open design with minimal horizontal surfaces
- Ideal for wipe down and occasional pressurized liquid spray cleaning up to 100 psi

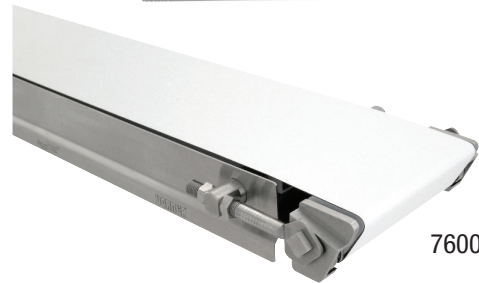


AquaPruf 7400 & 7600 Conveyors

- Belted, Cleated Belt, Modular Belt, and Modular Cleated Belt Models
- Loads up to 20 lbs/square foot of belt (90 kg/m²)
- Widths: 6" (152 mm) to 60" (1,524 mm)
- Lengths: 36" (914 mm) to 999" (25,375 mm)
- Continuous TIG welded 304 stainless steel frame with #4 Polish on all outside surfaces
- FDA approved belting, lubricant and plastic components
- Frame is designed with no horizontal surfaces for optimum cleaning
- Tip-up tail, optional frame cut-outs and optional belt lifters allow for fast and effective sanitation
- Designed to withstand high-pressure (100-1,500 psi) spray and chlorinated solutions.
- Features tool-less disassembly/assembly for cleaning of parts



7400 Curve



7600



AquaPruf
ULTIMATE

AquaPruf 7400 & 7600 Ultimate Conveyors

- USDA Approved belting and plastic components
- Meets USDA, NSF & AMI design specifications
- USDA red meat & poultry accepted equipment

AquaPruf VBT (Vertical Belt Technology) Conveyors

- Cleated Belt and Modular Belt Options
- Designed for bulk product handling
- Widths: 12" (305 mm) to 24" (610 mm)
- Heights up to 240" (6,096 mm)
- Open frame, tool-less sanitary design
- Continuous TIG welded 304 stainless steel frame with #4 Polish on all surfaces
- Open frame design for quick cleaning and more effective product changeover
- Proprietary staggered sidewall belt improves pocket capacity
- FDA Approved and USDA certified food safe belt material





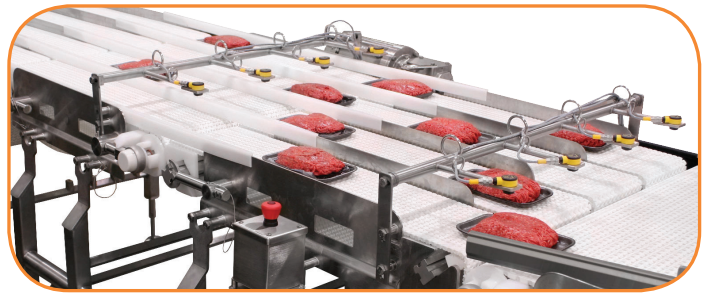
Product Separation & Spacing



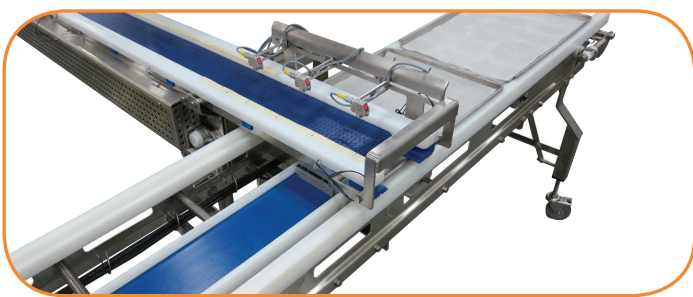
Ready-to-Eat Production Lines



Pack-Off Stations



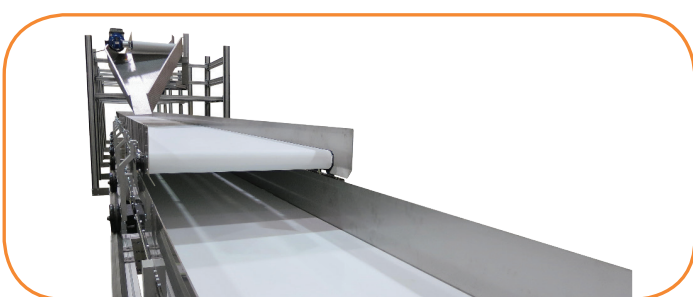
Merging & Diverting



Depositing Retracts



Singulating/Chicaning



Bulk Product Handling/Storeveyors



Product Rotation



Product Staging



Metal Detection

At Dorner we make it our mission to provide you with a system that you can depend on to move your product from point A to point B with precision and speed. It's that commitment and history of proven excellence that has made the Dorner Brand a recognized leader in precision conveyors for over 50 years. With our complete line of customizable conveyor systems we have the perfect solution for you!



1X Series

The 1X Series Line is designed for small part handling and transfers where space is a premium.

1X Series Family:

- Flat Belt
- Aluminum Frame
- Widths to 10"
- Loads to 15 lbs
- Speeds up to 80 fpm



2X Series

The 2X Series Line is engineered for small to medium sized parts, precision applications and flexible layouts.

2X Series Family:

- Flat Belt
- Cleated Belt
- Modular Belt
- Precision Move
- SmartFlex®
- Aluminum Frame
- Widths to 24"
- Loads to 200 lbs
- Speeds up to 400 fpm
- Curves



3X Series

The 3X Series Line is designed for medium to heavy sized parts, precision applications, bulk handling and flexible layouts.

3X Series Family:

- Flat Belt
- Cleated Belt
- Modular Belt
- Flexible Chain
- Precision Move
- Aluminum Frame
- Widths to 60"
- Loads to 1000 lbs
- Speeds up to 600 fpm
- Curves
- Z-Frame Elevators



7X Series

The 7X Series Stainless Steel Line is engineered for small to heavy product requiring various levels of sanitary design and flexible layouts.

7X Series Family:

- AquaPruf® + AquaGuard®
- Flat Belt
- Cleated Belt
- Modular Belt
- Flexible Chain
- Vertical Belt Technology
- Stainless Steel Frame
- Widths to 52"
- Loads to 750 lbs
- Speeds up to 400 fpm
- Curves
- Z-Frame Elevators

NEED SOMETHING DIFFERENT?

DORNER'S **ENGINEERED SOLUTIONS GROUP** PROVIDES EXACTLY WHAT YOU NEED FOR YOUR SPECIFIC APPLICATION. FROM MODIFIED STANDARD CONVEYORS TO COMPLETE CUSTOM DESIGNS.

LOOKING FOR AFTER SALE SUPPORT?

DORNER'S **SERVICES TEAM** PROVIDES COMPLETE SUPPORT FROM REPLACEMENT PARTS TO INSTALLATION AND MAINTENANCE SERVICES.



DORNER MFG. CORP.
PO Box 20 • 975 Cottonwood Ave.
Hartland, WI 53029 USA

INSIDE THE USA
TEL: 800.397.8664
FAX: 800.369.2440

OUTSIDE THE USA
TEL: 262.367.7600
FAX: 262.367.5827

www.dorner.com
info@dorner.com

